



lauxes  
GRATES

For GRATE peace of mind

**Product Catalogue**

[www.lauxesgrates.com.au](http://www.lauxesgrates.com.au)



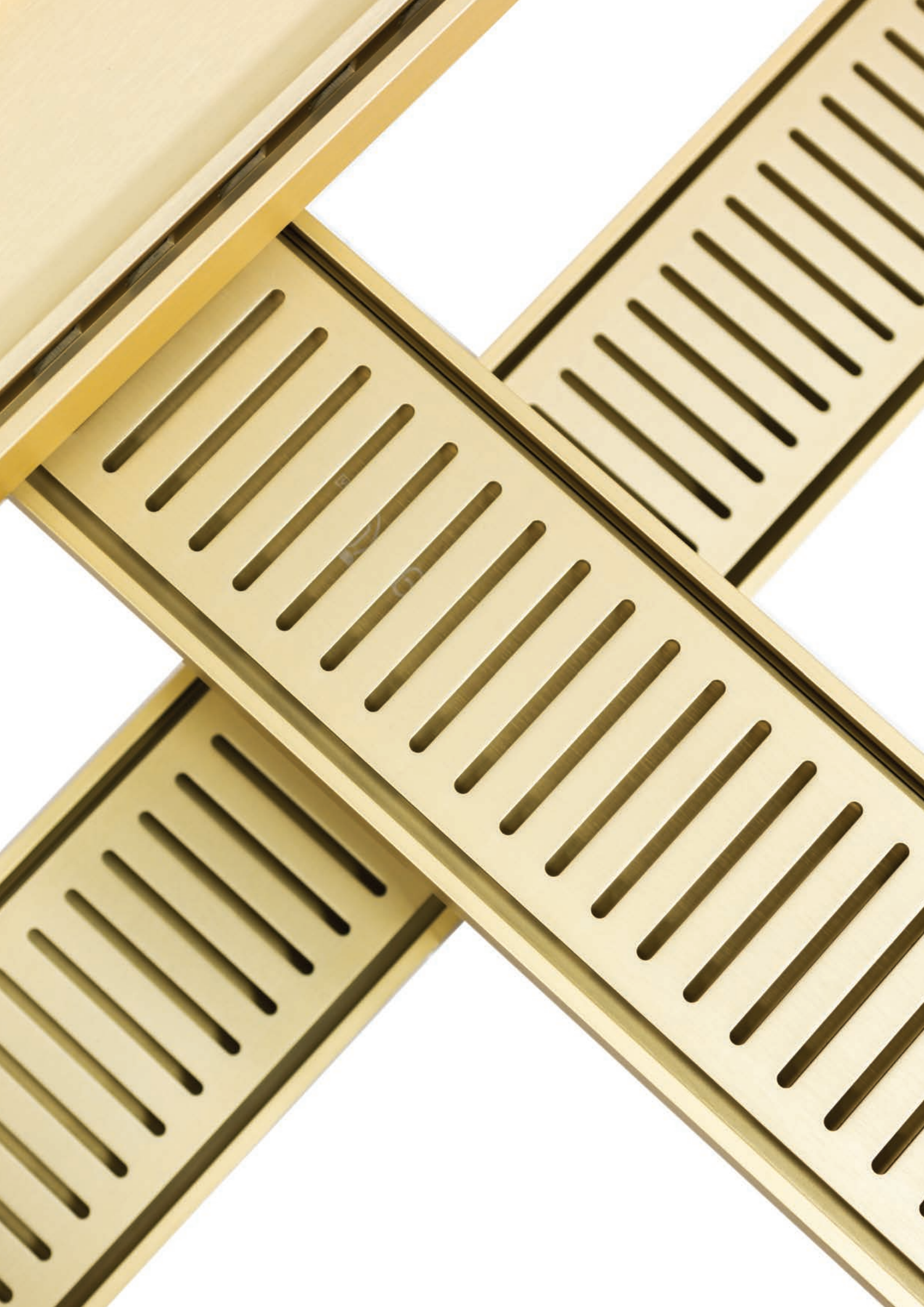
For **GRATE** peace of mind

## CONTENTS

<b>ABOUT</b>	4
<b>MATERIALS</b>	6
<b>APPLICATIONS</b>	7
<b>NEXT GENERATION GRATES</b>	10
NEXT GENERATION 14	12
NEXT GENERATION 26	14
NEXT GENERATION 35	16
<b>COMMERCIAL PROJECTS</b>	18
<b>RESIDENTIAL PROJECTS</b>	19
<b>STANDARD FLOOR GRATES</b>	22
STANDARD FLOOR GRATE	24
WIDE STANDARD FLOOR GRATE	26
<b>TILE INSERT GRATES</b>	30
TILE INSERT 21	32
SLIMLINE TILE INSERT	34
TILE INSERT PLUS	36
<b>STORM WATER GRATES</b>	40
<b>ACCESSORIES</b>	44
END CAPS	45
90 JOINERS	46
180 JOINERS	47
POP WASTES	48
HOLE SAWS	49
<b>SUMMARY</b>	50









## ABOUT

---

Lauxes Grates is one of Australia and New Zealand's most exclusive designers and manufacturers of versatile linear drainage solutions.

As industry leaders, Lauxes Grates services approx. 1600+ distributors via our warehouses in Queensland, Victoria, Western Australia and soon to be New South Wales.

With over 20 years of combined trade experience, our developers have created innovative anodized aluminium grates that are suitable for all indoor and outdoor areas.

Offering on-site customisation, our grates offer a quick installation, seamlessly blending with all property types.

Waterproof and corrosion free, all Lauxes grates come with a lifetime rustproof guarantee, giving you grate peace of mind.

Our creativity, industry knowledge and constant innovation keeps us at the forefront of the tiling and plumbing industry.

From high traffic outdoor spaces to indoor bathrooms, Lauxes Grates are a popular choice for builders, architects, tilers, plumbers and homeowners alike.

Meeting all specifications and regulations, our products are certified under the Australian WaterMark Scheme (WMTS 040-2021).

---



## WHAT SETS US APART FROM ALL THE OTHERS?

**LIFETIME**  
*Rustproof*  
**WARRANTY**

**WaterMark**  
WM - 022370  
WMTS.040

**UV**

Here at Lauxes Grates we live and breathe our four core values; We Don't Do Boring, We Make Shit Happen, We Stay Hungry and, We Speak POFL (positive outcome focused language).

Together we know we can achieve grateness! Culture is key as we are always thinking of new and innovative ideas, striving to improve processes and introduce new products, whilst constantly evolving and responding to change.

Our team of industry professionals are happy to help you every step of the way. Whether you need help in choosing the most suitable linear floor grate for your project or guidance regarding the installation of a grate... we've got you covered. We are committed to changing the world one grate at a time and we won't stop until we get there!



- ✓ ALL GRATES COME WITH A LIFETIME RUSTPROOF WARRANTY
- ✓ AVAILABLE IN MULTIPLE WIDTHS AND DEPTHS
- ✓ CERTIFIED UNDER THE WATERMARK CERTIFICATION SCHEME
- ✓ EASILY CUSTOMISABLE ON SITE WITHOUT LENGTHY DELAYS
- ✓ AVAILABLE IN MULTIPLE COLOURS
- ✓ UV STABLE - 25 YEAR WARRANTY AGAINST FADING

---

With over twenty years of combined trade experience, our developers have created innovative anodised aluminium grates that are suitable for all indoor and outdoor areas

## What is Anodising?

Anodising is an electrolytic passivation process where the porous on the surface of metals are coated to an oxide layer. This process increases the thickness of the natural oxide layer, making the metals resistant to corrosion and abrasion.

## Why Anodise Aluminium?

Anodising the aluminium makes the metal stronger and more durable, by adding an oxide layer that is almost as strong as diamond. The oxide on aluminium is naturally corrosion resistant, making it a very hard, abrasive resistant and an insulator.

In terms of aesthetic, the anodising process adds a coloured anodic film that will retain and enhance the aluminium inherent beauty. These aesthetics and durability features make anodised aluminium the ideal material for residential, commercial and industrial projects.

## Cleaning

Linear floor grates are easier to maintain than regular grates. Soapy water is our recommended method of cleaning a Lauxes grate. Mild detergents can be used to wipe and remove any matter or debris caught in the drainage area. Use a nylon cleaning pad or brush to run over the surface, rinse with warm water and dry with a clean cloth. Do not use abrasive or harsh chemicals such as acidic products on the grates. Also, do not use excessive force to remove any stubborn marks.

---



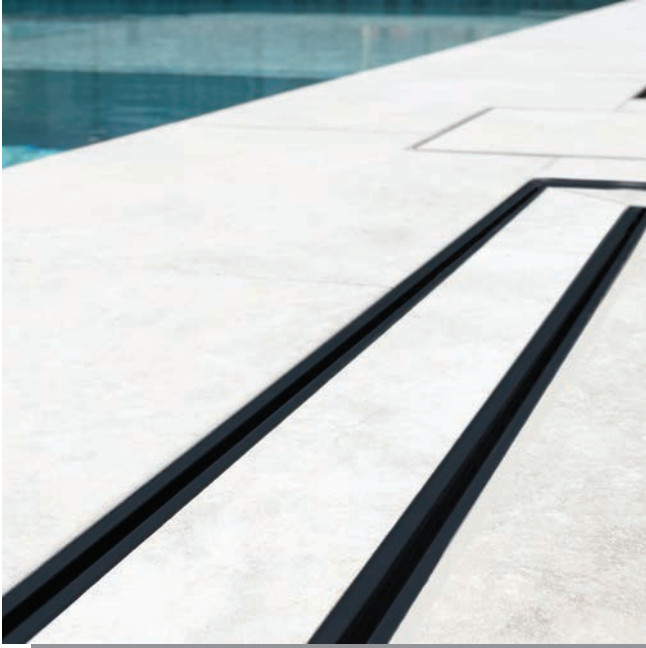
# MATERIALS

SLIMLINE TILE INSERT



# APPLICATIONS

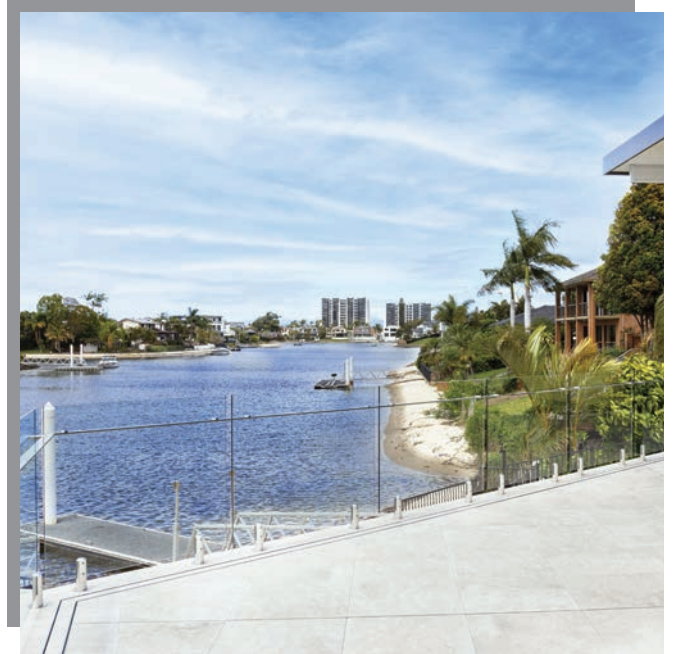
## SWIMMING POOLS



## BATHROOMS



## DRIVEWAYS



## BALCONIES







SLIMLINE TILE INSERT

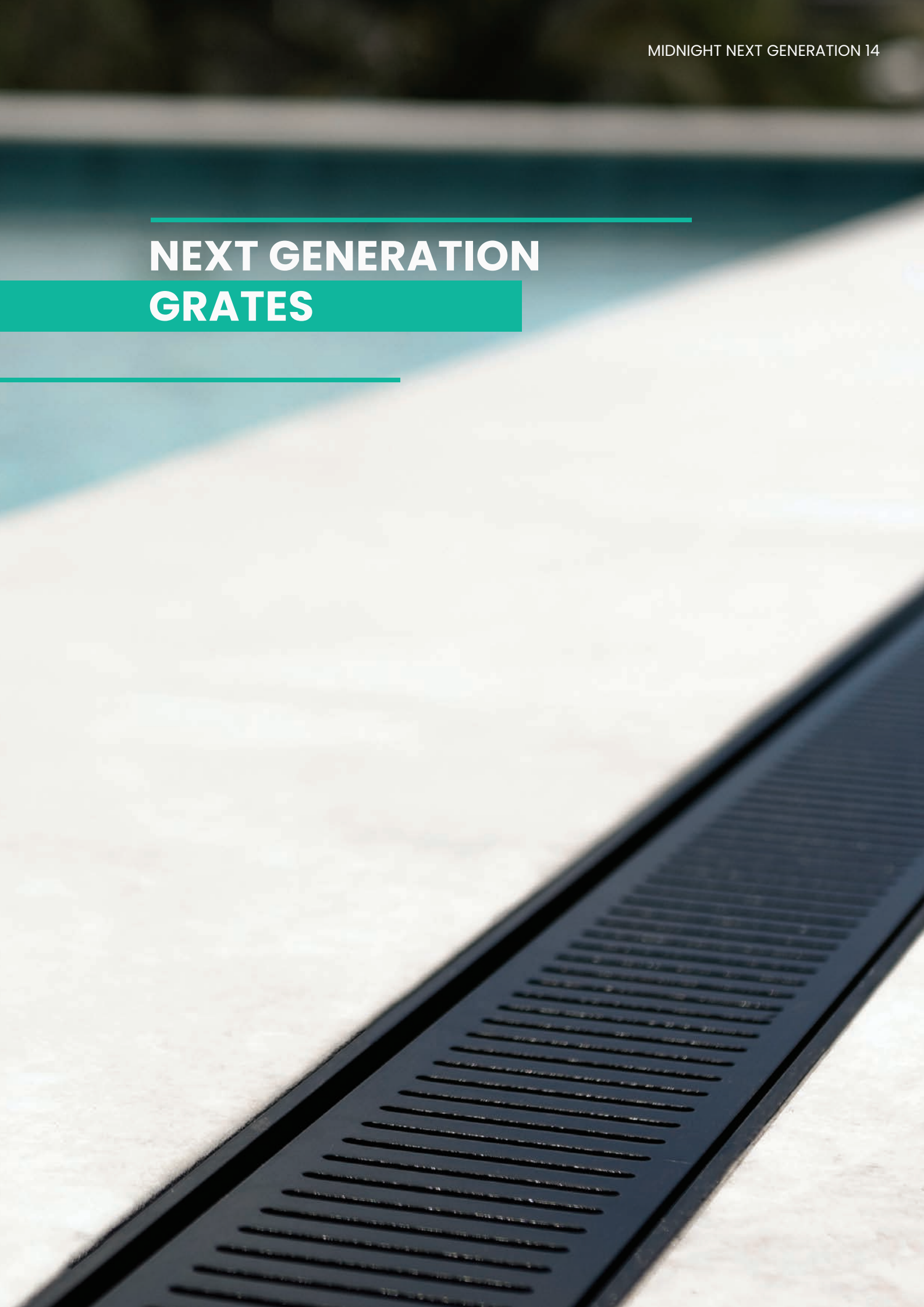




---

# NEXT GENERATION GRATES

---





## PRODUCT FEATURES

- COMES IN MULTIPLE LENGTHS AND COLOURS
- EASILY CUSTOMISABLE ON SITE
- 3 DIFFERENT DEPTHS
- ANTI TRACKING
- HEEL PROOF
- 25 YEAR WARRANTY AGAINST FADING
- LIFETIME RUSTPROOF WARRANTY
- EASY ROLL-OUT FEATURE FOR CLEANING AND MAINTENANCE

# NEXT GENERATION 14

---

---

## PRODUCT SPECIFICATIONS

---

<b>LENGTH</b>	3000MM
<b>DEPTH</b>	14MM
<b>WIDTH</b>	100MM
<b>COLOUR</b>	SILK SILVER, MIDNIGHT BLACK & MATTE GOLD
<b>MATERIAL</b>	ANODISED ALUMINIUM
<b>APPLICATIONS</b>	INDOOR/OUTDOOR

---



**NEXT  
GENERATION 14**  
NXT14  
LFGNXT14

---



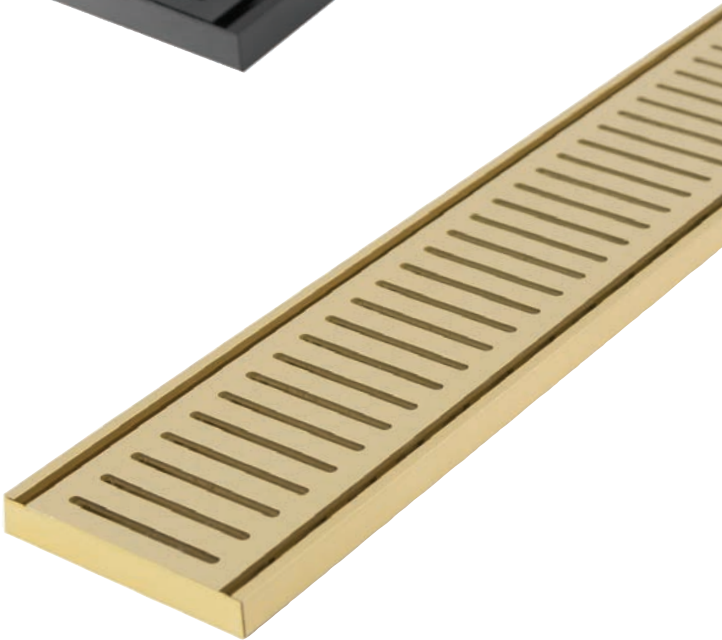
**MIDNIGHT NEXT  
GENERATION 14**  
MNXT14  
LFGMNXT14

---



**MATTE GOLD NEXT  
GENERATION 14**  
MYGNXT14  
LFGMYGNXT14

---



# NEXT GENERATION 26

---

---

## PRODUCT SPECIFICATIONS

---

<b>LENGTH</b>	5600MM
<b>DEPTH</b>	26MM
<b>WIDTH</b>	100MM
<b>COLOUR</b>	SILK SILVER, MIDNIGHT BLACK & MATTE GOLD
<b>MATERIAL</b>	ANODISED ALUMINIUM
<b>APPLICATIONS</b>	INDOOR/OUTDOOR

---



**NEXT  
GENERATION 26**  
NXT26  
LFGNXT26

---



**MIDNIGHT NEXT  
GENERATION 26**  
MNXT26  
LFGMNXT26

---



**MATTE GOLD NEXT  
GENERATION 26**  
MYGNXT26  
LFGMYGNXT26

---



# NEXT GENERATION 35

---

---

## PRODUCT SPECIFICATIONS

---

<b>LENGTH</b>	5600MM
<b>DEPTH</b>	35MM
<b>WIDTH</b>	100MM
<b>COLOUR</b>	SILK SILVER, MIDNIGHT BLACK
<b>MATERIAL</b>	ANODISED ALUMINIUM
<b>APPLICATIONS</b>	INDOOR/OUTDOOR

---



**NEXT  
GENERATION 35  
NXT35  
LFGNXT35**

---



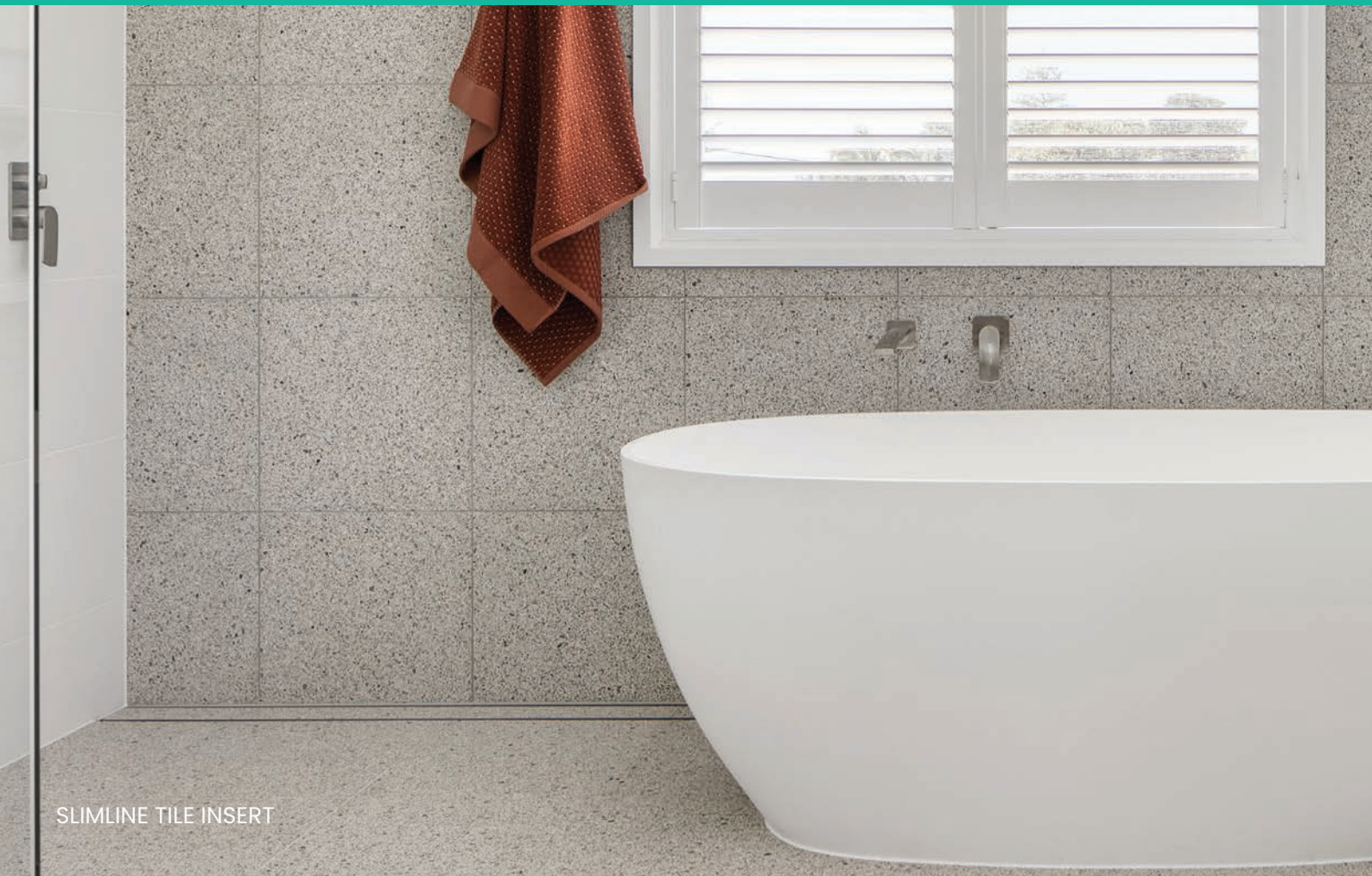
**MIDNIGHT NEXT  
GENERATION 35  
MNXT35  
LFGMNXT35**

---



SOAK BATH HOUSE

COMMERCIAL PROJECTS

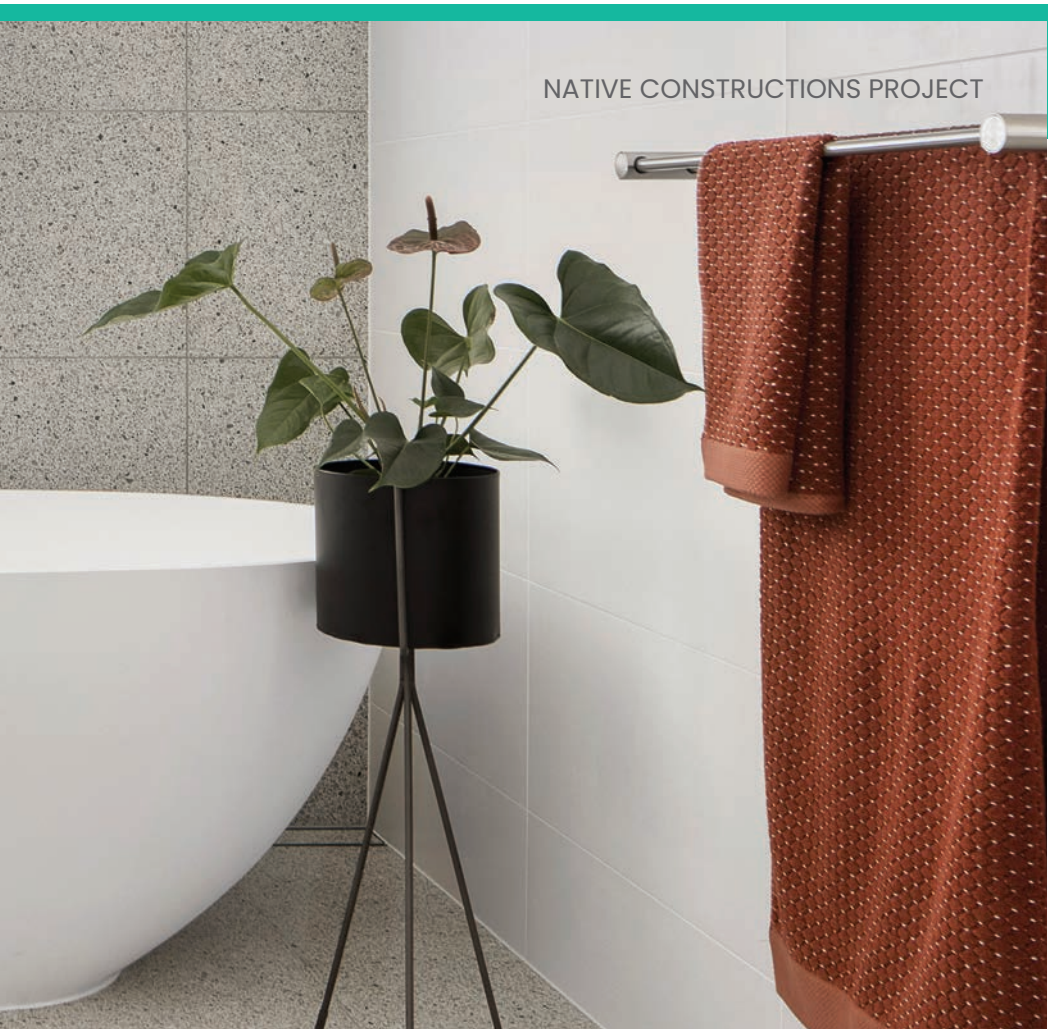


SLIMLINE TILE INSERT





TILE INSERT PLUS



NATIVE CONSTRUCTIONS PROJECT

## RESIDENTIAL PROJECTS



SLIMLINE TILE INSERT



MIDNIGHT TILE INSERT PLUS









**STANDARD FLOOR  
GRATES**



## PRODUCT FEATURES

- EASILY CUSTOMISABLE ON SITE
- HEEL PROOF
- 25 YEAR WARRANTY AGAINST FADING
- LIFETIME RUSTPROOF WARRANTY
- MODERN AND STYLISH DESIGN
- COMES IN 2 COLOURS AND WIDTHS

# STANDARD FLOOR GRATE

---

---

## PRODUCT SPECIFICATIONS

---

<b>LENGTH</b>	5600MM
<b>DEPTH</b>	23MM
<b>WIDTH</b>	70MM
<b>COLOUR</b>	SILK SILVER, MIDNIGHT BLACK
<b>MATERIAL</b>	ANODISED ALUMINIUM
<b>APPLICATIONS</b>	INDOOR/OUTDOOR

---



**STANDARD  
FLOOR GRATE**

**SFG**

LCFGRATE

---



**MIDNIGHT STANDARD  
FLOOR GRATE**

**MSFG**

LCMFGRATE

---



# WIDE STANDARD FLOOR GRATE

---

---

## PRODUCT SPECIFICATIONS

---

<b>LENGTH</b>	5600MM
<b>DEPTH</b>	26MM
<b>WIDTH</b>	100MM
<b>COLOUR</b>	SILK SILVER, MIDNIGHT BLACK
<b>MATERIAL</b>	ANODISED ALUMINIUM
<b>APPLICATIONS</b>	INDOOR/OUTDOOR

---



**WIDE STANDARD  
FLOOR GRATE**

**WSFG**

LCWFGRATE

---



**MIDNIGHT WIDE  
STANDARD  
FLOOR GRATE**

**MWSFG**

LCMWFGRATE

---







**STORM WATER GRATES**



**STANDARD FLOOR GRATES**



**TILE INSERT GRATES**



**NEXT GENERATION GRATES**





**TILE INSERT  
GRATES**

## PRODUCT FEATURES

- COMES IN MULTIPLE LENGTHS AND SIZES
- ACCOMMODATES DIFFERENT TILE SIZES
- EASILY CUSTOMISABLE ON SITE
- ANTI TRACKING
- 25 YEAR WARRANTY AGAINST FADING
- LIFETIME RUSTPROOF WARRANTY
- MODERN AND STYLISH DESIGN
- EASY ROLL-OUT FEATURE FOR CLEANING AND MAINTENANCE



# TILE INSERT 21

---

---

## PRODUCT SPECIFICATIONS

---

<b>LENGTH</b>	3000MM
<b>DEPTH</b>	21MM
<b>WIDTH</b>	100MM
<b>COLOUR</b>	SILK SILVER, MIDNIGHT BLACK
<b>MATERIAL</b>	ANODISED ALUMINIUM
<b>APPLICATIONS</b>	INDOOR/OUTDOOR
<b>TILE</b>	UP TO 10MM THICK

---

**SLIMLINE  
TILE INSERT 21**  
STI21  
LCSTIGRATE21

---



**MIDNIGHT SLIMLINE  
TILE INSERT 21**  
MSTI21  
LCMSTIGRATE21

---





# SLIMLINE TILE INSERT

---

---

## PRODUCT SPECIFICATIONS

---

<b>LENGTH</b>	5600MM
<b>DEPTH</b>	26MM
<b>WIDTH</b>	100MM
<b>COLOUR</b>	SILK SILVER, MIDNIGHT BLACK & MATTE GOLD
<b>MATERIAL</b>	ANODISED ALUMINIUM
<b>APPLICATIONS</b>	INDOOR/OUTDOOR
<b>TILE</b>	UP TO 11MM THICK

---

**SLIMLINE  
TILE INSERT**

**STI**  
LCSTIGRATE

---



**MIDNIGHT SLIMLINE  
TILE INSERT**

**MSTI**  
LCMSTIGRATE

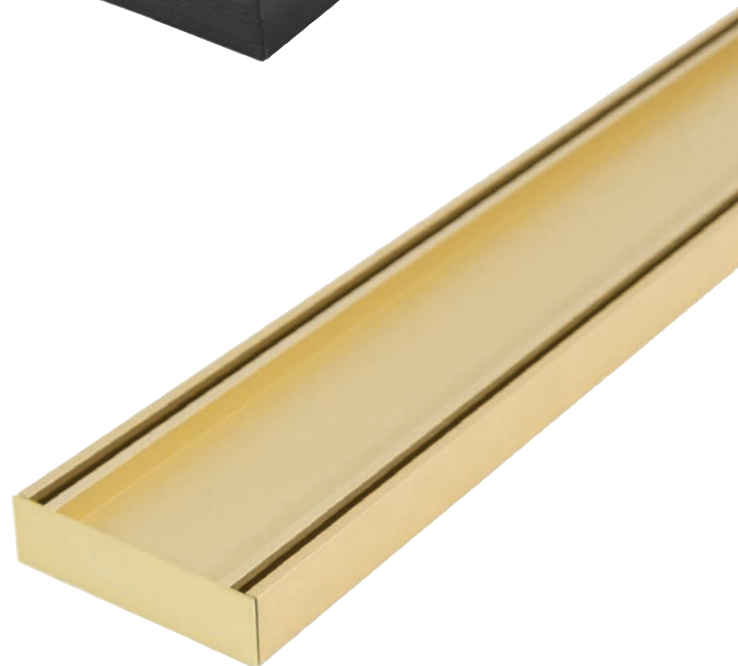
---



**MATTE GOLD  
SLIMLINE TILE INSERT**

**MYGSTI**  
LCMYGSTIGRATE

---





# TILE INSERT PLUS

---

---

## PRODUCT SPECIFICATIONS

---

<b>LENGTH</b>	5600MM
<b>DEPTH</b>	35MM
<b>WIDTH</b>	100MM
<b>COLOUR</b>	SILK SILVER, MIDNIGHT BLACK
<b>MATERIAL</b>	ANODISED ALUMINIUM
<b>APPLICATIONS</b>	INDOOR/OUTDOOR
<b>TILE</b>	UP TO 18MM THICK

---

**TILE INSERT  
PLUS  
TIP**  
LCTIGRATE

---



**MIDNIGHT TILE  
INSERT PLUS**  
MTIP

---

LCMTIGRATE







**STORM WATER  
GRATES**

## PRODUCT FEATURES

- STYLISH REPLACEMENT TOP FOR EXISTING STORM WATER GRATE
- EASILY CUSTOMISABLE ON SITE
- COMES IN 2 STYLES
- HEEL PROOF
- 25 YEAR WARRANTY AGAINST FADING
- LIFETIME RUSTPROOF WARRANTY
- ENGINEERED TO WITHSTAND HEAVY LOADS
- PERFECT FOR DRIVEWAYS AND ALFRESCO AREAS
- EASY TO REPLACE / DIY

# STORM WATER GRATES

---

---

## PRODUCT SPECIFICATIONS

---

<b>LENGTH</b>	5600MM
<b>DEPTH</b>	19MM TOP ONLY
<b>WIDTH</b>	128MM
<b>COLOUR</b>	SILK SILVER, MIDNIGHT BLACK
<b>MATERIAL</b>	ANODISED ALUMINIUM
<b>APPLICATIONS</b>	OUTDOOR
<b>TILE INSERT</b>	UP TO 13MM THICK

---



**128 STORM WATER  
NEXT GENERATION**  
128SWG NXT  
L128SWG NXT

---



**128 STORM WATER  
MIDNIGHT NEXT  
GENERATION**  
128SWG MNXT  
L128SWG MNXT

---



**128 STORM WATER  
MIDNIGHT TILE INSERT**  
128SWG MTI  
L128SWG MTI

---



\*AVAILABLE IN MIDNIGHT BLACK ONLY











# ACCESSORIES

# END CAPS

## AVAILABLE IN



End Caps (pair)  
14mm x 100mm  
LCFGRATEC100-14  
Silk Silver  
Suitable for NXT14



End Caps (pair)  
14mm x 100mm  
LCFGRATEC100-14M  
Midnight Black  
Suitable for MNXT14



End Caps (pair)  
14mm x 100mm  
LCFGRATEC100-14MYG  
Matte Gold  
Suitable for MYGNXT14

## AVAILABLE IN



End Caps (pair)  
21mm x 100mm  
LCFGRATEC100S-21  
Silk Silver  
Suitable for STI21



End Caps (pair)  
21mm x 100mm  
LCFGRATEC100S-21M  
Midnight Black  
Suitable for MSTI21

## AVAILABLE IN



End Caps (pair)  
23mm x 70mm  
LCFGRATEC  
Silk Silver  
Suitable for SFG



End Caps (pair)  
23mm x 70mm  
LCFGRATECM  
Midnight Black  
Suitable for MSFG

## AVAILABLE IN



End Caps (pair)  
26mm x 100mm  
LCFGRATEC100S  
Silk Silver  
Suitable for NXT26,  
WSFG & STI



End Caps (pair)  
26mm x 100mm  
LCFGRATEC100SM  
Midnight Black  
Suitable for MNXT26  
MWSFG & MSTI



End Caps (pair)  
26mm x 100mm  
LCFGRATEC100SMYG  
Matte Gold  
Suitable for MYGNXT26  
MYGNXT26

## AVAILABLE IN



End Caps (pair)  
35mm x 100mm  
LCFGRATEC100  
Silk Silver  
Suitable for NXT35  
& TIP



End Caps (pair)  
35mm x 100mm  
LCFGRATEC100M  
Midnight Black  
Suitable for MNXT35  
& MTIP

# 90° JOINERS

AVAILABLE IN



90° Joiners (pair)  
LCFJOINER90-14  
Silk Silver  
Suitable for NXT14



90° Joiners (pair)  
LCMFJOINER90-14  
Midnight Black  
Suitable for MNXT14



90° Joiners (pair)  
LCMYGFJOINER90-14  
Matte Gold  
Suitable for MYGNXT14

AVAILABLE IN

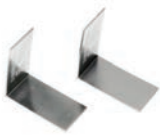


90° Joiners (pair)  
LCFJOINER90-21  
Silk Silver  
Suitable for STI21



90° Joiners (pair)  
LCMFJOINER90-21  
Midnight Black  
Suitable for MSTI21

AVAILABLE IN



90° Joiners (pair)  
LCFJOINER90-22  
Silk Silver  
Suitable for SFG



90° Joiners (pair)  
LCMFJOINER90-22  
Midnight Black  
Suitable for MSFG

AVAILABLE IN



90° Joiners (pair)  
LCFJOINER90-26  
Silk Silver  
Suitable for WSFG,  
NXT26 & STI



90° Joiners (pair)  
LCMFJOINER90-26  
Midnight Black  
Suitable for MWSFG,  
MNXT26 & MSTI



90° Joiners (pair)  
LCMYGFJOINER90-26  
Matte Gold  
Suitable for MYGNXT26  
& MYGSTI

AVAILABLE IN



90° Joiners (pair)  
LCFJOINER90-35  
Silk Silver  
Suitable for TIP  
& NXT35



90° Joiners (pair)  
LCMFJOINER90-35  
Midnight Black  
Suitable for MTIP  
& MNXT35



# 180° JOINERS

AVAILABLE IN



180° Joiners (pair)  
LCFJOINER180-14  
Silk Silver  
Suitable for NXT14



180° Joiners (pair)  
LCMFJOINER180-14  
Midnight Black  
Suitable for MNXT14



180° Joiners (pair)  
LCMYGFJOINER180-14  
Matte Gold  
Suitable for MYGNXT14

AVAILABLE IN



180° Joiners (pair)  
LCFJOINER180-21  
Silk Silver  
Suitable for ST121



180° Joiners (pair)  
LCMFJOINER180-21  
Midnight Black  
Suitable for MST121

AVAILABLE IN



180° Joiners (pair)  
LCFJOINER180-22  
Silk Silver  
Suitable for SFG



180° Joiners (pair)  
LCMFJOINER180-22  
Midnight Black  
Suitable for MSFG

AVAILABLE IN



180° Joiners (pair)  
LCFJOINER180-26  
Silk Silver  
Suitable for WSFG,  
NXT26 & STI



180° Joiners (pair)  
LCMFJOINER180-26  
Midnight Black  
Suitable for MWSFG,  
MNXT26 & MSTI



180° Joiners (pair)  
LCMYGFJOINER180-26  
Matte Gold  
Suitable for MYGNXT26  
& MYGSTI

AVAILABLE IN



180° Joiners (pair)  
LCFJOINER180-35  
Silk Silver  
Suitable for TIP  
& NXT35



180° Joiners (pair)  
LCMFJOINER180-35  
Midnight Black  
Suitable for MTIP  
& MNXT35

# POP WASTES



AVAILABLE IN



40mm  
LCFGRATEW40  
Silk Silver



40mm  
LCFGRATEW40M  
Midnight Black



40mm  
LCFGRATEW40MYG  
Matte Gold



AVAILABLE IN



50mm  
LCFGRATEW50  
Silk Silver



50mm  
LCFGRATEW50M  
Midnight Black



50mm  
LCFGRATEW50MYG  
Matte Gold



AVAILABLE IN



72mm  
LCFGRATEW72  
Silk Silver



72mm  
LCFGRATEW72M  
Midnight Black



72mm  
LCFGRATEW72MYG  
Matte Gold



AVAILABLE IN



80mm  
LCFGRATEW80  
Silk Silver



80mm  
LCFGRATEW80M  
Midnight Black



80mm  
LCFGRATEW80MYG  
Matte Gold

# HOLE SAWS



Size: 40mm  
Code: LHSTCT40

Suitable for 40mm pop waste.

Complete assembly included - there is no requirement to purchase a separate arbor and pilot drill.



Size: 50mm  
Code: LHSTCT50

Suitable for 50mm pop waste.

Complete assembly included - there is no requirement to purchase a separate arbor and pilot drill.



Size: 72mm  
Code: LHSTCT72

Suitable for 72mm pop waste.

Complete assembly included - there is no requirement to purchase a separate arbor and pilot drill.



Size: 80mm  
Code: LHSTCT80  
Suitable for 80mm pop waste.

Complete assembly included - there is no requirement to purchase a separate arbor and pilot drill.

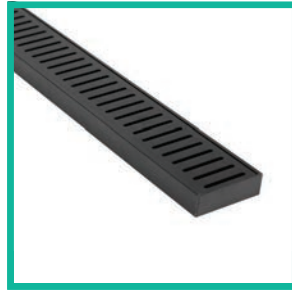


# STANDARD FLOOR GRATES



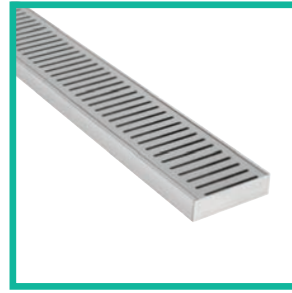
Standard Floor Grate (**SFG**)

70mm x 23mm x 5600mm



Midnight Standard Floor Grate (**MSFG**)

70mm x 23mm x 5600mm



Wide Standard Floor Grate (**WSFG**)

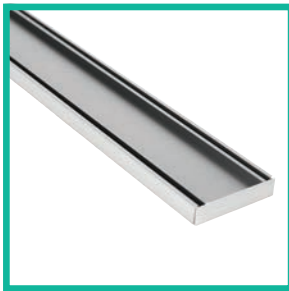
100mm x 26mm x 5600mm



Midnight Wide Standard Floor Grate (**MWSFG**)

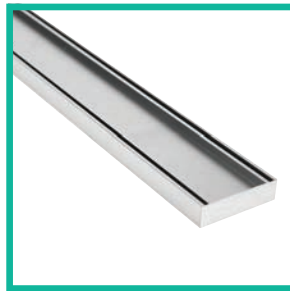
100mm x 26mm x 5600mm

# TILE INSERT GRATES



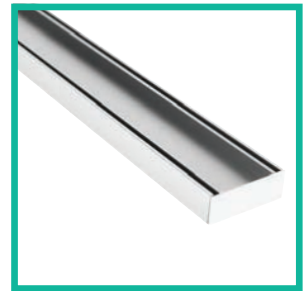
Slimline Tile Insert 21 (**STI21**)

100mm x 21mm x 3000mm



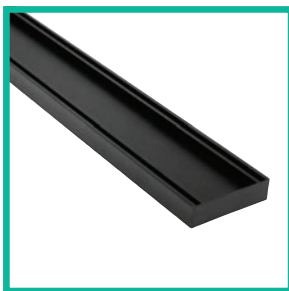
Slimline Tile Insert (**STI**)

100mm x 26mm x 5600mm



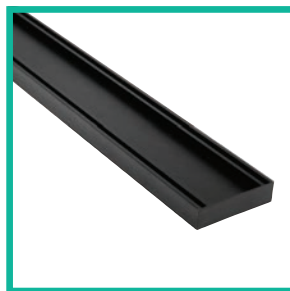
Tile Insert Plus (**TIP**)

100mm x 35mm x 5600mm



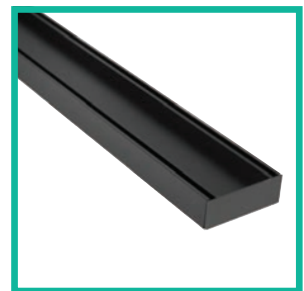
Midnight Slimline Tile Insert 21 (**MSTI21**)

100mm x 21mm x 3000mm



Midnight Slimline Tile Insert (**MSTI**)

100mm x 26mm x 5600mm



Midnight Tile Insert Plus (**MTIP**)

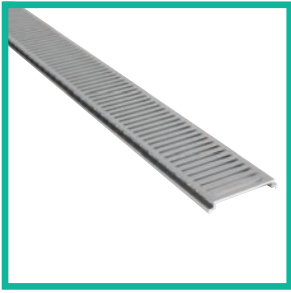
100mm x 35mm x 5600mm



Matte Gold Slimline Tile Insert (**MYGSTI**)

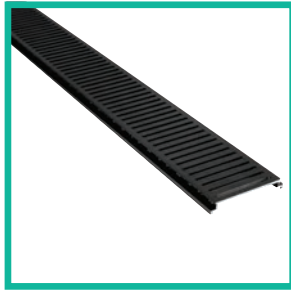
100mm x 26mm x 5600mm

# STORM WATER GRATES



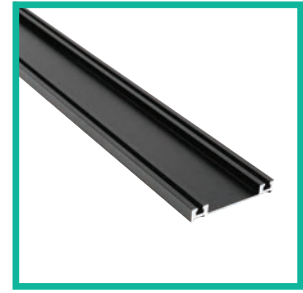
128 Storm Water  
NeXT Generation  
**(128SWGNT)**

128mm x 19mm x 5600mm  
TOP ONLY



128 Storm Water Midnight  
NeXT Generation  
**(128SWGMENT)**

128mm x 19mm x 5600mm  
TOP ONLY



128 Storm Water  
Midnight Tile Insert  
**(128SWGMIT)**

128mm x 19mm x 5600mm  
TOP ONLY

# NEXT GENERATION GRATES



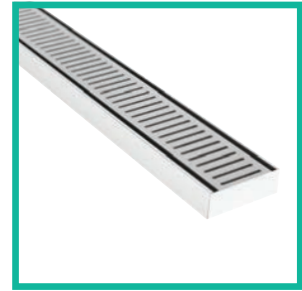
NeXT Generation 14  
**(NXT14)**

100mm x 14mm x 3000mm



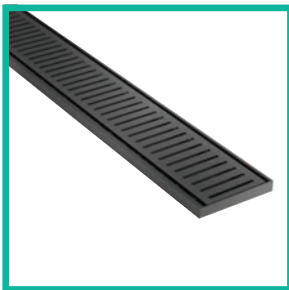
NeXT Generation 26  
**(NXT26)**

100mm x 26mm x 5600mm



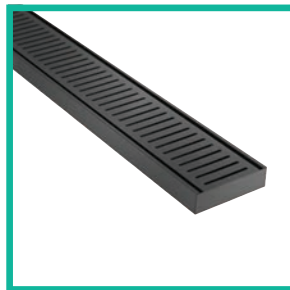
NeXT Generation 35  
**(NXT35)**

100mm x 35mm x 5600mm



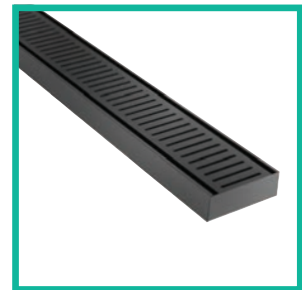
Midnight NeXT  
Generation 14 **(MNXT14)**

100mm x 14mm x 3000mm



Midnight NeXT  
Generation 26 **(MNXT26)**

100mm x 26mm x 5600mm



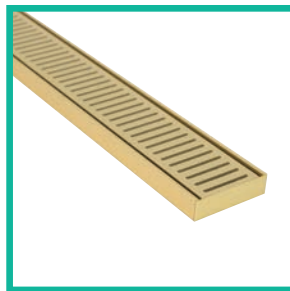
Midnight NeXT  
Generation 35 **(MNXT35)**

100mm x 35mm x 5600mm



Matte Gold NeXT  
Generation 14 **(MYGNXT14)**

100mm x 14mm x 3000mm



Matte Gold NeXT  
Generation 26 **(MYGNXT26)**

100mm x 26mm x 5600mm



For **GRATE** peace of mind

## CONTACT

**Phone:**

1300 214 510

**Email:**

[hello@lauxesproducts.com.au](mailto:hello@lauxesproducts.com.au)

**Website:**

[www.lauxesgrates.com.au](http://www.lauxesgrates.com.au)

**Address:**

Lauxes Grates  
PO Box 23  
Ashmore City  
QLD 4214  
Australia

FOR MORE INFO  
VISIT

